

# Product Guide



The FROMM Group designs and manufactures a comprehensive range of systems for unitizing and palletizing goods, including strapping machine systems, pallet stretch wrapping machines, Airpad void filling solutions and other related equipment - along with all required consumables.

[www.frommpackaging.ca](http://www.frommpackaging.ca)  
**905-428-3444**

# PAGE OF CONTENTS

Stretch Wrapping Machines	04
Strapping Machines	09
Protective Packaging	13
Gummed Tape Dispenser	25
Strapping Tools	27
Automated Solution	32
Strapping	35
Accessories	37
Service & Repair	38
Lifecycle Care	39

# About Us

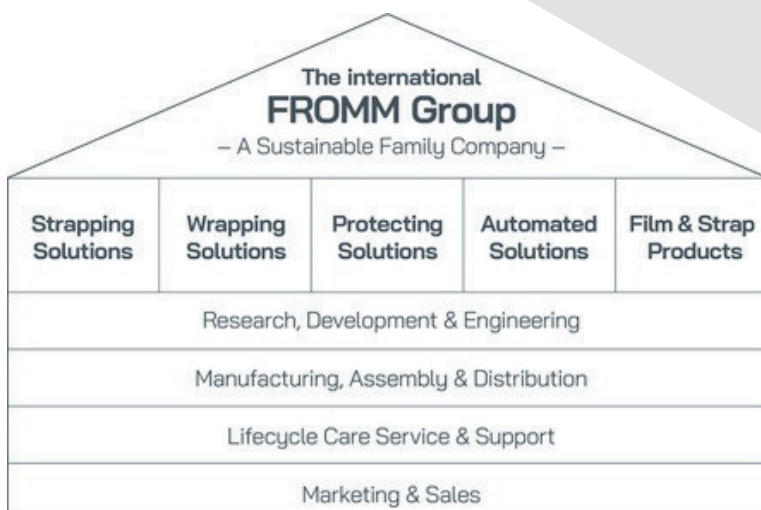
The FROMM Group develops, manufactures, markets and maintains a range of high quality packaging solutions. These solutions are both innovative and progressive for demanding customers and industries around the world.

Offering high quality and reliable protection to our customers products our well trained specialists create added value by optimizing the total cost of ownership. Quality awareness, Commitment, Proximity and Sustainability are paramount in the development of our FROMM Solutions

## Our Vision

We actively strive, within all our capabilities, to develop and produce better products and services, to offer our customers best quality and security

*by FROMM* – since 1947



FS335

**FROMM** | PACKAGING  
SYSTEMS

## Turntable Stretch Wrapping Machine

*Customized solution for efficient and effective pallet wrapping.*

The FS335 modular construction, carriage upgrades and attractive purchase price offers many expansion options for almost all budgets and user requirements. A wide variety of branded parts, including electronics and motors, optimizes operational reliability and reduces maintenance requirements to a minimum. High Safety and Ease of use is inherent in their design. This makes them an attractive alternative in any purchasing process.

**Economic All-Rounder** Streamline your packaging with a machine that does it all, efficiently and cost- effectively.

### Compact Design

Save on shipping with our easy-to-transport machine. Plus, it's a breeze to fit into tight spaces.

### Plug & Play

Skip the hassle! Easy installation means you're up and running in no time.

### Minimal Maintenance

Spend less time on upkeep and more time on what matters—your business.

### User-Friendly

Our excellent human interface ensures easy operation, even if you have multiple operators.

### Customizable

A wide range of options and modular design to adapt to your specific needs.



### Technical Features

- Control Panel with LEXAN display Turntable
- Max. load dimensions: 800 x 1200 mm
- Max. load weight: 2000Kg
- Wrapping height (Pallet included): 2200 mm
- Base-frame turntable height: 75 mm
- Automatic load height reading by photocell
- Acceleration / Deacceleration ramps controlled by inverter
- Spool carriage upwards/downwards speeds controlled by inverter
- Emergency mushroom button according to CE regulations
- Mechanical button to re arm the machine according to CE regulations.
- Beeper at cycle start, phase stopping and cycle end



# Turntable Stretch Wrapping Machine

*Customized solution for efficient and effective pallet wrapping.*

## FS2000



**FROMM** | PACKAGING SYSTEMS

FROMM 2000-series Stretch Wrapping machines represent the latest state of the art. With the new 7" Touch Screen not only all operating actions can be performed, but also - 99 individual programs can be set and service information can be viewed. FS2000 offers the most ingenious and efficient functions that enable the user to carry out the entire wrapping process, from start to finish, automatically and remotely. Thus being able to work more efficiently and save significantly on labour time and costs.

In particular, the new revolutionary and patented Air technology option *Æolus™* - film attachment by air - plays an essential role here.

- **High-Efficiency Film Stretching** – Three film carriages with up to 350% power pre-stretch optimize film usage for cost-effective and secure packaging.
- **Smart Customization** – A 7" touch screen allows up to 99 programmable wrapping settings for tailored operations.
- **Flexible Mast Heights** – Five mast options accommodate pallet heights from 0.5m to 3.8m.
- **Enhanced Versatility** – Compatible with various turntables
- **Adaptable for Any Terrain** – Six standard ramps ensure seamless operation across different surfaces.
- **Embedded Floor Frames** – Optional floor installation eliminates the need for ramps.
- **Environmental Adaptability** – Available in cold store and stainless-steel versions for specialized applications.
- **Advanced Functionalities** – Includes film cutting, auto/manual roping, 3-lane banderole wrapping, scale units, printers, photocells, film roll adapters, and remote control options.



### The Aeolus Air Technology option

**Æolus™**  
BY FROMM



The *Æolus™* Air technology option

Available on all FROMM FS2000 series film wrapping machines. Includes remote control, automatic cutting of the film at the end of each wrapping cycle and the subsequent attachment of the film end against the package, by air. With this feature, the film no longer has to be attached to the pallet by hand and it is sufficient to position. The wrapping process can then be started remotely (from the fork lift). At the end of each wrapping cycle the film is automatically cut off and attached against the package, by air.



No additional machine guards or other mechanisms are required for this option.

Efficient, Labor and cost saving as well as Health and Safety friendly!

# Self-Propelling Robot Stretch Wrapping Machines

## FR2000 SERIES

3rd Generation

With the 2000 series, FROMM heralds a new era of its extensive range of wrapping solutions. The self-propelled FR2000 robot wrapping machines are clearly at the forefront of developments within this machine segment.

In addition to a robust frame and a wide range of configuration options, standard components—including the advanced 7" touch screen control panel (OP) mounted on the mast, integrated visual and audible indicators, an ergonomically optimized handlebar, and a high-impact bumper—are designed to enhance operator efficiency and safety, while upholding FROMM's reputation for sustainable engineering, premium build quality, and minimal maintenance requirements.

The most notable new option is the patented and revolutionary **Aeolus™** film attachment system by air.

Bringing automation within reach, without significant investments. Instantly saving time and labour costs.



Available on all FROMM 2000 series film wrapping machines. Includes **remote control, automatic cutting** of the film at the end of each wrapping cycle and the subsequent attaching of the film end against the package, **by air**. With this feature, the film no longer has to be attached to the pallet by hand and it is sufficient to position the robot against the pallet. The wrapping process can then be **started remotely** (from the forklift). At the end of each wrapping cycle, the film is **automatically cut off** and attached against the package, by air. No additional machine guards or other mechanisms are required for this process.

### Some of the most interesting Options

- Coreless coils
- Coil holder kit for Net-wrapping
- Manual or automatic film roping
- Film cutting at the end of the wrapping cycle.
- Automatic cutting film strips (3, 4 or 5 strips)
- Remote control Start - stop in 0-position.
- Low temp (-5°C) kit
- Extra batteries, with extra external charger
- Stretch film consumption measuring unit
- Cycle counter
- Choice of various guidance units and wheels for a variety of pallet loads



WATCH VIDEO

# Orbital Wrapping Machines

## FV350 Series

The FV350 Series **automatic vertical wrapping machines**, with their **High-Speed Twin Film roll** wrapping technology, belong to the FROMM EasyWrap family of wrapping machines. Prepared to fit easily and quickly into any system. Installation, integration and commissioning require no additional preparation or adjustments. Changing film rolls is a breeze.

Their simple, straightforward construction and the use of branded parts, make them extremely durable, reliable, easy to maintain and energy efficient. The FV350 Series have 6 different ring diameters available, from 50 to 250cm (19.7 - 98"). Ideally suited for quickly and efficiently wrapping all kinds of products, in series or single pieces; long simple bundles or irregular products.

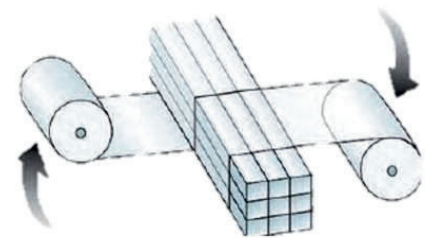
The FV350 Series is produced in the EU, offering you a highly competitive price/performance ratio.

### Features and Benefits

- Safe and Sound for carefree and Long-Life operation, Easy to maintain.
- Automatic film clamping (attaching) and cutting (end of cycle) device. The installed PLC makes it fully prepared to be Easily integrated into automatic packaging lines and communicate with other systems.
- A choice of various ring diameters enables you to select an optimal ring/package ratio, for the best and most consistent wrapping result.
- The Twin Film Roll Dispenser allows you to wrap up to 1.8x faster than usual, with single roll technique.
- A well positioned robust touch screen Operating Panel (OP), to Easily manage the settings of your FV350, for the best and a consistent wrapping result. The closed wrapping ring construction offers your employees extra security during the wrapping process.
- Both film roll holders are equipped with a mechanical brake, which allows you to stretch the film as needed for the desired wrapping result.
- Various optional features available, including package presses and guides, roller and belt conveyors, connectors to external systems, electronic photocells for pack detection and many more.

### Technical Data

- Ring speed, adjustable between 5 - 350 rpm.
- Required air pressure (film cutting device and presses) 6 Bar.
- Ring diameters : 19.7 / 35 / 49 / 63 / 78 / 98"
- Ring speed inverter and PLC: Fuji and Omron
- Processes film thicknesses: 17 / 20 / 23 / 30 micron
- Handles film roll widths: 39 / 67 / 98"
- Conveyor speed: up to 30 m/min.



**WATCH VIDEO**



# Manual Pallet Wrapper

## FM50



### **The economical and labour friendly alternative to film wrapping by hand.**

With the FM50 EasyWrap, hand wrapping of pallets becomes a pleasant and work-friendly activity. It is no longer necessary to crawl or walk around a pallet with the film roll in your hand. This protects the arms and back of your employees.

### **Tightly wrapped pallets**

The FM50 EasyWrap ensures consistently secure and tightly wrapped pallets while optimizing film consumption. Engineered for versatility, it accommodates a wide range of pallet types, sizes, and weights—delivering efficient and rapid wrapping performance.

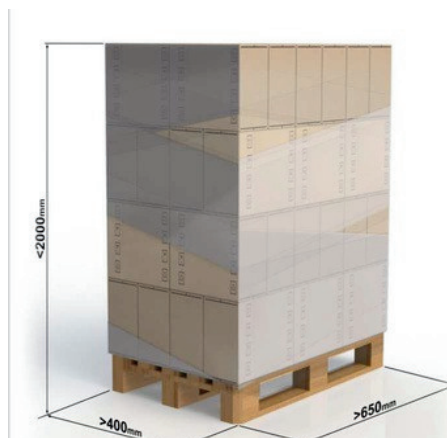
### **Easy operation**

With no electrical components or motor drive. The light design and the simple operation enables everyone to work with it perfectly.

### **Wrap and save money with thin or pre-stretched films.**

The FM50 EasyWrap is ® equipped with an adjustable film brake with which thin or even pre-stretched films can be processed. The film carriage is moved up and down via a mechanical transfer, as required. Due to the open construction, roll changes can be carried out quickly and with ease.

In short, EasyWrap® offers many interesting benefits for a particularly attractive price.





# Automatic & Semi-Automatic Strapping Machines



## Tabletop Strapping machine

- Open Design for Easy Loading and Maintenance
- Powerful DC Motor for Reliable Strapping
- Adjustable Tension for Versatile Applications
- Handles a Variety of Strap Widths 1/4", 3/8", 1/2", 5/8" in.



## Features

- Electronic tension control ensures perfect strap tightness every time.
- Protect your products and cut down on wasted strap.
- Adjustable cooling time prevents strap breakage from improper sealing.
- Power Saving Motor This smart motor works only when needed, saving you money and extending the life of your machine.
- The easy-access jog switch simplifies maintenance and keeps your operation running smoothly.
- Ergonomic DC motor design with no clutch, belt and chain means fewer breakdowns and lower maintenance costs.

## TECHNICAL SPECIFICATIONS

STRAP WIDTH	1/4", 3/8", 1/2", 5/8" in.
POWER SUPPLY	110V / 60Hz 1-Phase
POWER CONSUMPTION	0.15kW
MACHINE TENSION	0.8KG / 1.76 lbs – 60KG / 132.28 lbs
MACHINE DIMENSION	30.71 in (L) X 21.42 in (W) X 30.71 in (H)
MACHINE WEIGHT	53KG / 116.84 lbs

# Automatic Strapping Machines

FRP1100



## Features

- **Electronic Outside Tension Control:** Consistent, reliable strap tension for secure packages.
- **Table Sensor:** Automatic operation for a hands-free, seamless workflow.
- **Auto Strap Threading:** Quick and simple setup minimizes downtime.
- **Loop Ejection:** Prevents jams and ensures smooth operation.
- **Second Strap Refeed:** Reduces strap waste and saves you money.
- **Auto Last Strap Ejection:** Prepares the machine for the next cycle, boosting efficiency.
- **No Moving Parts :** Low maintenance design for hassle-free operation and reduced costs.
- **Dispenser Inside Cabinet:** Streamlined design saves valuable workspace.
- **Easy Panel with Rotation:** Effortless control and adjustments for maximum efficiency.
- **Jog Switch For Service & Maintenance:** Easy troubleshooting keeps your machine running at its best.



37 Straps  
Per Minute



Simple  
Machine Head



Electronic  
Tension Control



Loop  
Ejection



Auto  
Strap Thread



Second  
Strap Refeed



Auto Last  
Strap Ejection

## TECHNICAL SPECIFICATIONS

STRAP WIDTH	1/4", 3/8", 1/2", 5/8" in.
POWER SUPPLY	110 V / 60Hz,1-Phase
POWER CONSUMPTION	0.60KW
MACHINE TENSION	5 KG / 11 lbs – 65KG / 143 lbs



Automatic Strapping machine with brushless DC motor. The SQ-800 provides better efficiency without compromising the reliability of the legendary RQ-8x. Standard strapping rate is 55 straps/min, even when tension is applied. Advanced electrical technology. Self-lubricating design. Recommended for throughput of 40-50 packages per hour in full industrial environments.

## TECHNICAL SPECIFICATIONS

<b>ARCH WIDTH</b>	<b>25" TO 89" / 635 MM - 2260 MM</b>
<b>ARCH HEIGHT</b>	<b>16" to 68" 406 mm to 1600 mm</b>
<b>MIN PACKAGE SIZE</b>	<b>W 80 X 30 mm W 1 1/8" X 1 1/8"</b>
<b>CORE</b>	<b>8X8 or 9 X 8 in.</b>
<b>POWER SUPPLY</b>	<b>110V 1 Phase 60 Hz 0.35KW</b>



Automatic Strapping machine with brushless DC motor. At 65 straps per minute. Available in several different arch and strap sizes. SM65, high-speed strapping machine that consumes less power, requires fewer adjustments, and minimal maintenance.

## TECHNICAL SPECIFICATIONS

<b>ARCH WIDTH</b>	<b>25" TO 89" / 635 MM - 2260 MM</b>
<b>ARCH HEIGHT</b>	<b>16" to 68" 406 mm to 1600 mm</b>
<b>MIN PACKAGE SIZE</b>	<b>W 70 X 20 mm   2.75" Wide x .75</b>
<b>WEIGHT</b>	<b>160 KG / 352 LBS</b>
<b>TABLE HEIGHT</b>	<b>32.3" - 36.2 " / 820 mm - 920 mm</b>

Standard arch 25" W X 20"H **foot pedal included**  
Various arch sizes available.



# AP1000

ALL-IN-ONE

Another  
Smart Solution  
by FROMM

**Airpad**<sup>TM</sup>  
BY FROMM

AP1000 ALL-IN-ONE  
4th Generation Universal  
Air-cushion System

# AP1000 ALL-IN-ONE

## 4th Generation Universal Air-cushion System

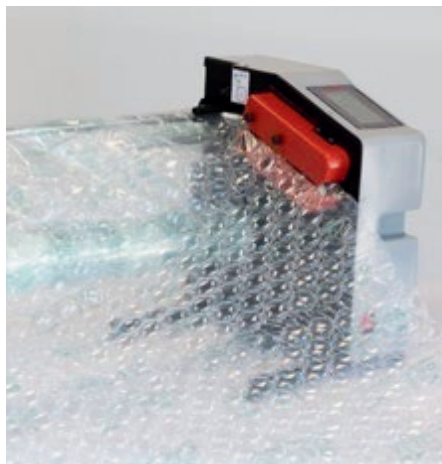
### Works with all available materials and patterns

- PE, rPE, Bio, Paper
- Up to 800mm width
- Air-cushions or bubble on demand



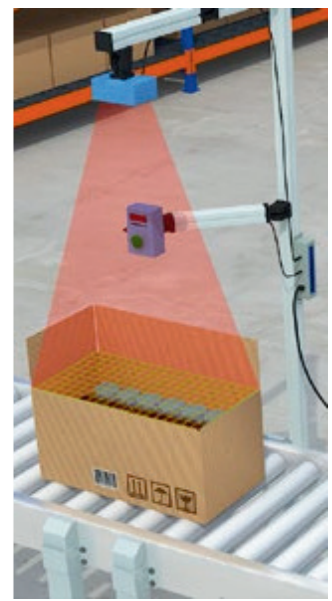
### Innovative

- 2-side sealings for a better control and superior sealing strength
- Patented no contact end of the roll sensor
- Touch screen for easy machine control



### Technical specifications

- Weight: 11,5 Kg - 31.9 lbs
- Dimensions (hxlxw):  
430x390x360 mm  
(roll 200) 16.9x15.4x14.2"
- Speed: 20m/min. -  
65.6 ft/min.
- Power supply:  
110V, 60 Hz
- Item code: 50.2105



### Accessories/integration

- Air cushion Separator 50.2130
- SmartFill scanner 50.100250
- Custom designed solutions



## Eye catching benefits

- Compact, small footprint
- Easy to integrate
- Easy to operate
- 2 way M2M Communication for optimum uptime
- Excellent working conditions • Superior productivity, up to 20 m/min. - 65.6 ft/min.
- Adjustable filling rate
- Manual or (semi) automatic operation
- Production of calibrated volumes possible in combination with a SmartFill scanner / shooter (option)
- Optional collection of extended usage statistics via an IIoT Gateway

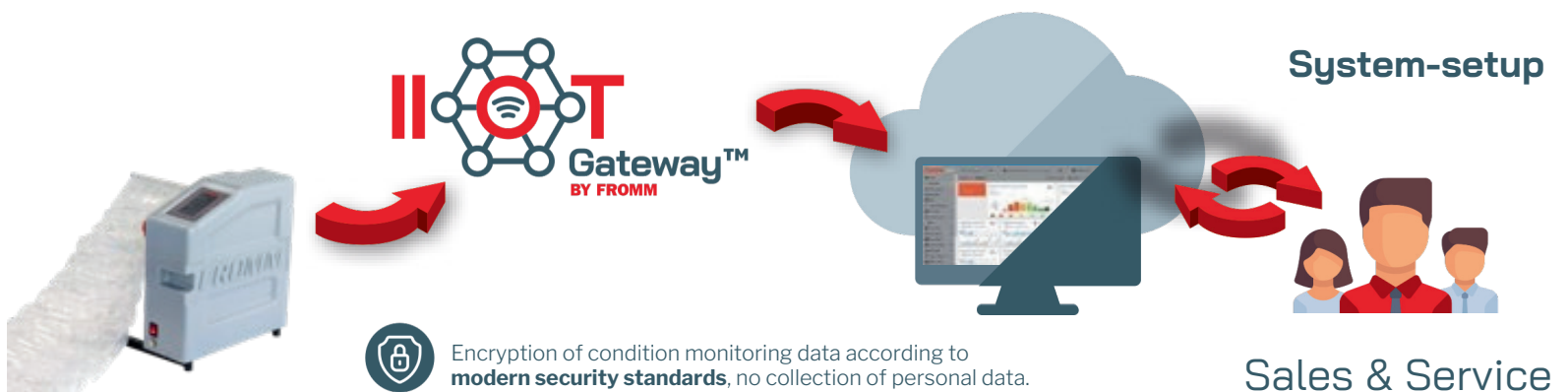
## **Airpad**<sup>TM</sup> BY FROMM **IIoT Gateway**

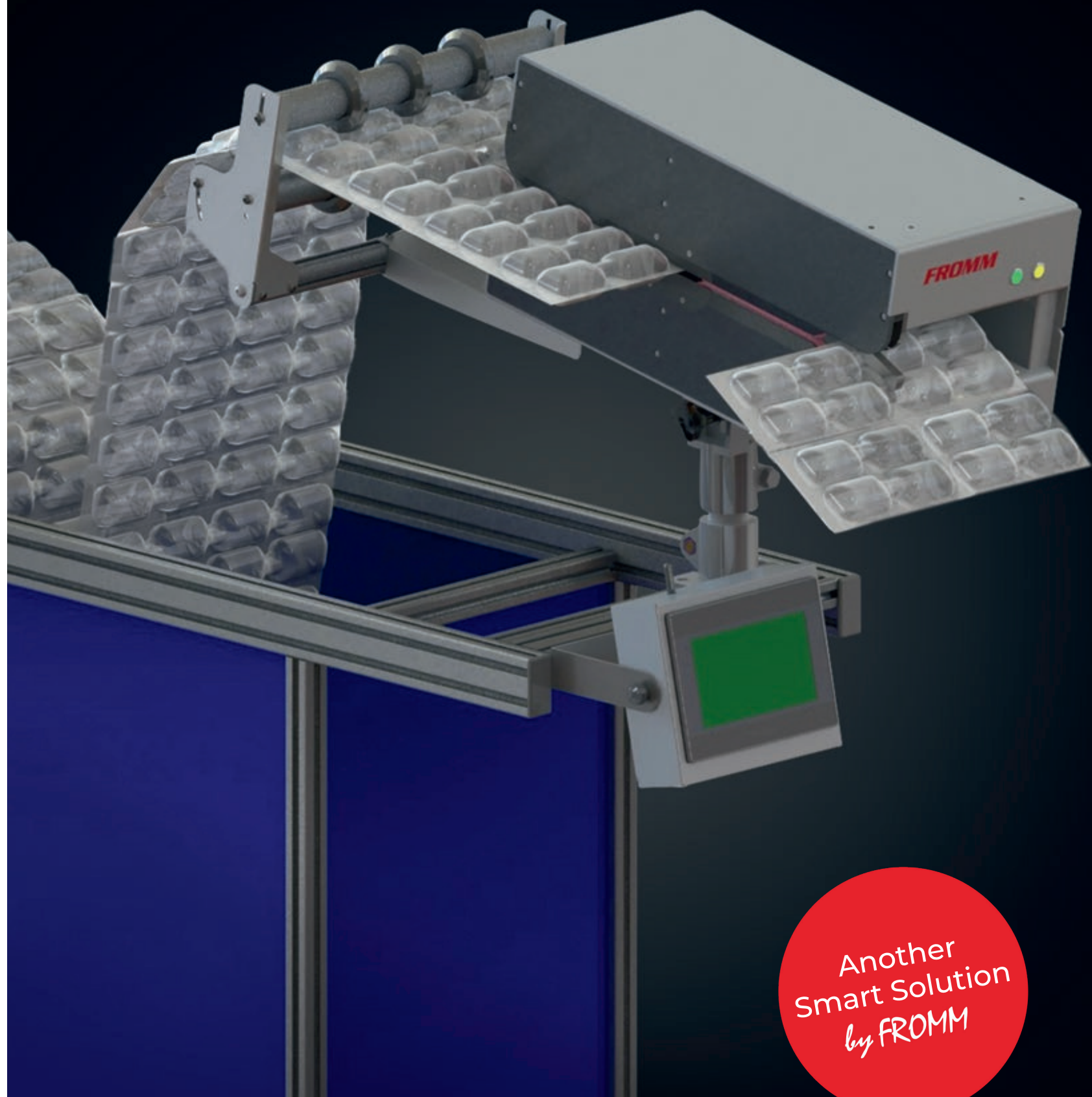
### Our solution for automated process monitoring

The **IIoT-Gateway**<sup>TM</sup> seamlessly integrates the **Airpad AP1000** with the cloud, ensuring secure data transmission. Once connected, it continuously monitors and transmits key machine insights, including **operating conditions, performance parameters, consumable usage, and component wear levels**. This real-time data can be visualized and analyzed through **Fromm IIoT**, enabling **proactive maintenance, optimized efficiency, and enhanced machine uptime**. The platform serves as an invaluable tool for maximizing performance and streamlining service management.

### Maximizes process continuity by:

- Monitoring machines remotely
- Optimizing preventative maintenance
- Shortening machine service
- Materials usage follow-up





Another  
Smart Solution  
by FROMM

**Airpad**<sup>TM</sup>  
BY FROMM

**SmartFill**

Scanner & Air cushion Separator

# 1

## AIRPAD Scanner

FROMM's compact void measuring device for optimum void filling

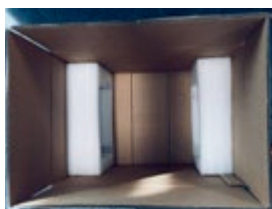
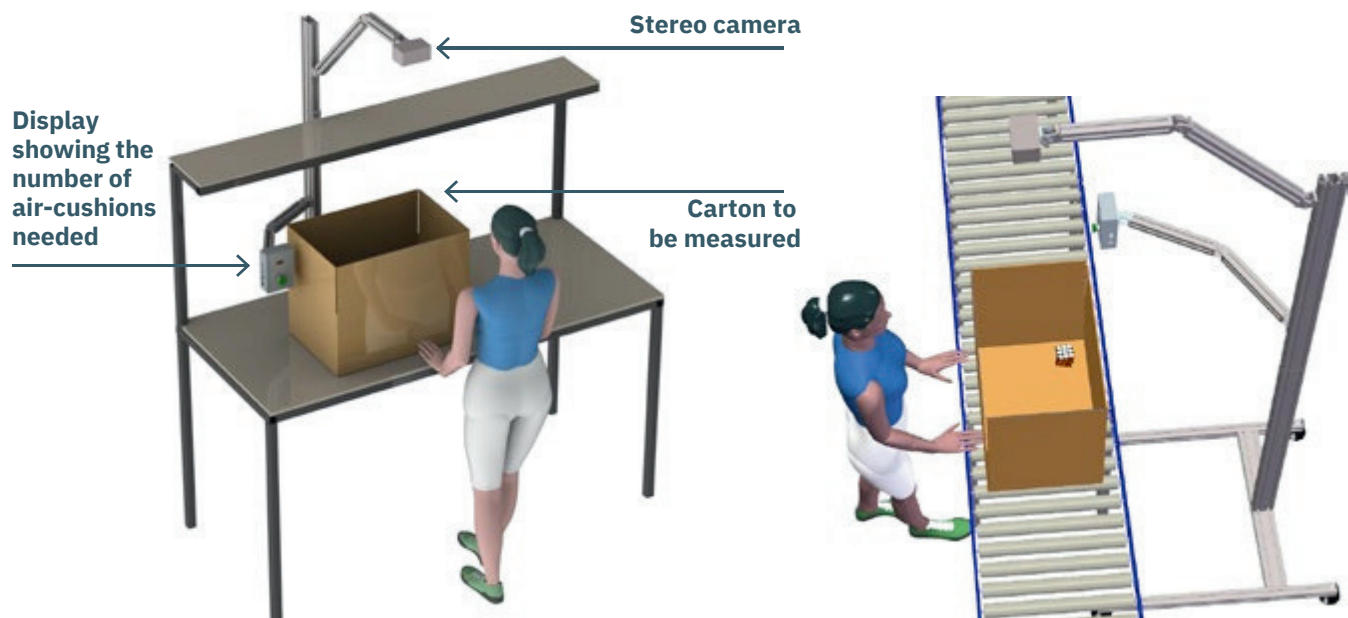
### Always the right number of air cushions

- Calculates the optimum number of air cushions for each carton.
- Ensures the best protection for each carton
- Reduces product damages
- No learning curve for new operators to pack with the best protection
- In combination with the Separator for improved productivity

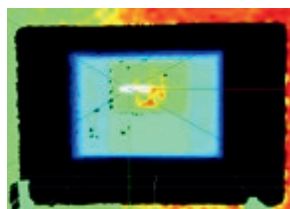
### Technical specifications

- Power supply: 90 - 240 V, 50 / 60 Hz
- Communication port: RJ485
- Connectors: USB – A, 5-pins, 3-pins
- Weight: 3.5 kg | 11.5 Lbs (without options)
- Speed: up to 20 cartons/min
- Carton size up to  
**600 x 500 x 600 L x W x H (mm) / 24 x 20 x 24 (in)**
- Item code: 50.100250

### System setup



1.Package is detected by the camera and the volume is scanned



2.Calculate the optimum number of air cushions



3.Digital display for simple and fast process flow



## AIRPAD Air cushion Separator

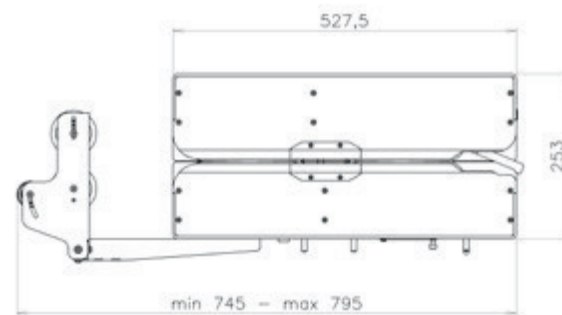
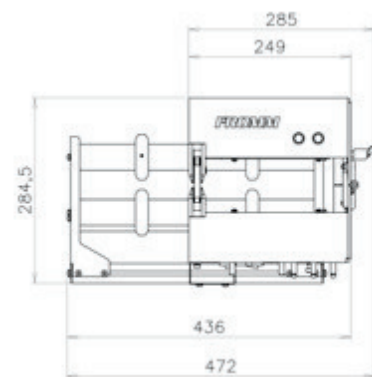
### FROMM's compact cutting and dispensing air-cushion device

#### High speed void filling

- Automatic air cushion separation with high speed transport for quick release, low cycle time (300 ms for a 150mm / 6" cushion)
- Dispense pre-separated cushions at arm's length of the operator for optimum working conditions
- Large touch screen operating panel, wireless for easy integration
- 3 operating modes
- Manual with foot pedal
- Semi automatic with pre-defined lengths to choose from the touch panel
- Automatic replenishment of a pre-set number of cushions
- In connection with the AIRPAD Scanner

#### Technical specifications

- Speed: up to 60 m/min / 200 ft/min
- For films up to 400 mm / 16" wide
- Power supply: 110V 60 Hz
- Communication ports: RJ485, USB 4.0, Coax
- Monitoring and tracking system for easy maintenance
- Weight: 25.5 kg | 82.0 Lbs (without options)
- Item code: 50.2130



#### Setup

##### With Compact bin



##### With Overhead hopper system



•Item code: 50.2131

# PC1000



Another  
Smart Solution  
by FROMM

**Paperpad**<sup>TM</sup>  
BY FROMM

**PC1000**

Compact paper system



# PC1000



WATCH VIDEO

For safe, quiet and cost effective paper protection.

## Compact system, fits everywhere

- Small footprint for both machine and paper
- Very safe, no cutting device
- Silent machine, usable close to operators
- Adjustable paper compression for efficient and cost effective protection
- 5 production modes: Automatic, Demand, Program, Silo and Scan
- Foot pedal can also be used
- Delivers the adequate quantity of paper per box when associated with a Smartfill scanner in option
- Easy collection of comprehensive usage statistics through an IIoT Gateway.



## Paperpad Technical specifications

Machine dimensions	L X W X H: 25.6" X 15.8" X 13.7"
Box weight	8 kg
Box length	235 m
Speed	40 m/min, adjustable
Compression ratio	1.40 to 2.00



## Paper

### Patented crumpling system

- Pre-folded with no glue for improved compacity
- Easy and safe loading
- High yield and high pressure resistance
- Pre-cut paper for easy adjustment to the box
- Easy to flatten for an improved unpacking experience

### PC1000 Technical specifications

- 100 % recycled paper, FSC certified
- Pre-formed paper 57#
- 771 ft per bundle
- Pre-cut every 2.75 in
- Paper bundle: 17.6 lbs
- Paper pack: 13.8" x 7.1" x 10.2"
- Item code: : 37.3329



## Options

### Compact Swivel Paperpad

- Item code: 50.2137



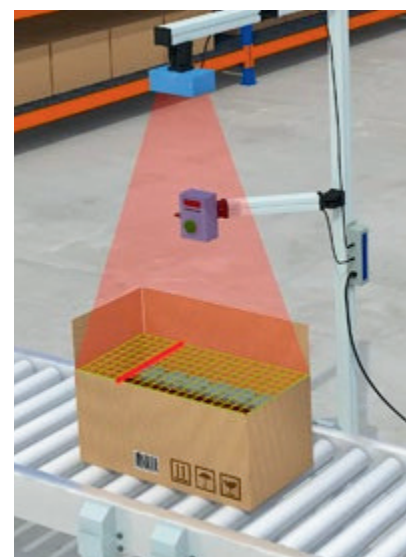
### Compact Stand Paperpad

- Item code: 50.2133



### Smartfill Scanner

- Item code: 50.100251



# PC100

STAND ALONE

**Paperpad**  
BY FROMM

Another  
Smart Solution  
by FROMM

**Paperpad**<sup>TM</sup>  
BY FROMM

**PC100** STAND ALONE  
High Speed  
Paper Pack Station



# PC100 STAND ALONE

## High Speed Paper Pack Station



WATCH VIDEO

The Paperpad PC100 system converts 100% recycled FSC certified, recyclable paper into a high-volume crumpled paper at high speed. It ensures optimum void filling and product protection during storage and transport.



### Easy to operate

3 functioning modes can be easily set and changed by the operator, via the simple and clear control panel on the front.

Paper loading is extremely simple and safe and can be done in no time.



Table top stand

### Easy to integrate into any pack station

With a choice of multiple adjustable supports for the PC100, integration at pack stations is very easy.



Movable stand with small paper pack holder

Movable stand with large paper pack holder

### Cost efficient

High speed, large volume, ease of use and efficient integration make the PC100 a great solution for superior protection.

### Technical specifications

- Weight: 20 Kg – 44.09 lbs.
- Dimensions: (hxlxw)  
317x677x435 mm –  
12.6x26.7x17.1"
- Speed: 60m/min. – 197 ft/min.
- Paper separation: Automatic cutting blade
- Power supply: 100–240V,  
50/60 Hz
- Item code: 16.4464

## Paper qualities

- Paper weight: 50 gr/m2 – 34 lbs.
- Paper type: brown FSC certified 100% recycled, Fanfold
- Length / pack: 500 mtrs. – 1,640 ft.
- Pack width: 375 mm – 14.7" (+/- 1%)
- Weight / pack: 9,4 kg. – 20.7 lbs.

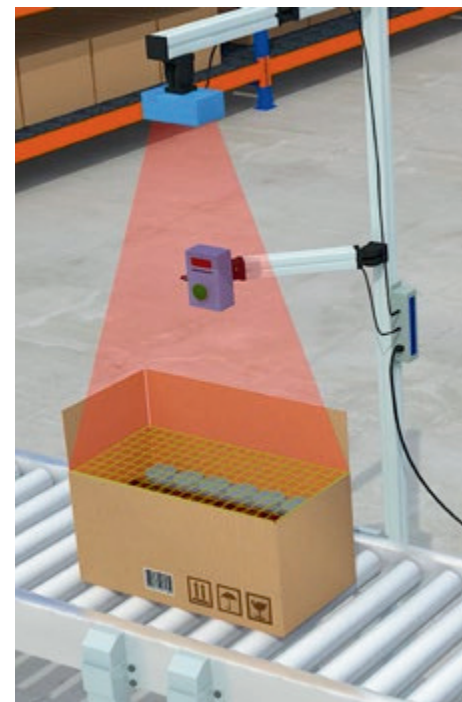
- Paper weight: 70 gr/m2 – 47 lbs.
- Paper type: brown FSC certified 100% recycled, Fanfold
- Length / pack: 400 mtrs. – 1,312 ft.
- Pack width: 375 mm – 14.7" (+/- 1%)
- Weight / pack: 10.5 kg. – 23.1 lbs.

## Accessories/integration (Item Code)

- Mobile stand alone support with gas spring (PPC1.0131)
- Mobile stand alone support without gas spring (PPC1.0144)
- Table stand (PPC1.0140)
- 1 Pack paper tray (PPC1.0148)
- 3 Pack paper tray (PPC1.0147)
- USA Power cable (PPC1.3288)
- European power cable (PPC1.3289)

## Eye catching benefits

- Compact, small footprint
- Easy to integrate
- Easy to operate
- Productivity and Ergonomics
- Control of the protection and the paper usage with the SmartFill.
- Superior production speed up to 60 mtrs/min. 197 ft/min.
- Adjustable height and output angle



## Custom designed solutions

- FROMM is present at all steps of your project, from Identification of needs to installation and full maintenance off the line
- FROMM's end-of-the line expertise ensures reliable solutions, increased productivity and optimum ergonomics



**On-time  
delivery**



**Optimum working  
conditions**



**Profitable  
equipment**



**Flexible  
financing**

**FROMM** | PROTECTING  
SOLUTIONS

## A 5-STEP PROCESS

- 1 Needs identification**  
Audit questionnaire for accurate description of requirements
- 2 Integration approach**  
2D-/3D drawings within 2 weeks  
Quotation Lead time
- 3 System manufacturing**
- 4 Installation & commissioning**
- 5 Maintenance & Support**



# FC-G82

## Gummed Paper Tape Dispenser



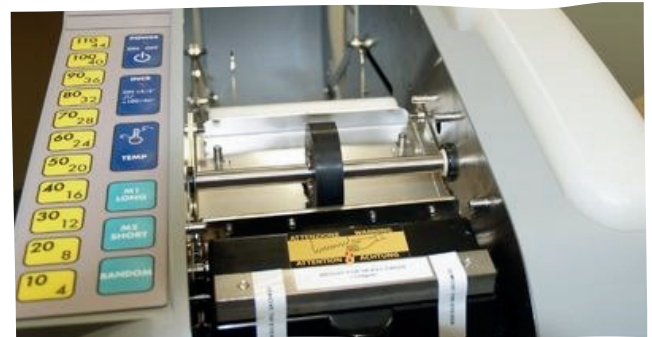
- Easy to Use
- Compact & Easy to Integrate
- Fast & Efficient
- Clear Control Panel
- Delivers any requested length
- Upto 10x higher adhesive strength than plastic tapes
- Large Water Tank - 2 Ltrs
- Simple Roll Change

A person is shown using a white, handheld water-activated gummed paper tape dispenser to seal a large cardboard box. The dispenser is labeled 'FC-G82' and is dispensing a strip of brown adhesive tape. The person's hands are visible, one holding the box and the other operating the dispenser. The background is a blurred warehouse or shipping area.

The FC-G82 water activated tape dispenser is an efficient and eco-friendly tool for applying water-activated tape to seal packaging. It's programmable tape length feature reduces waste and provides a tamper-evident seal.

The dispenser is easy to use, and its compact size makes it convenient to integrate into any packing line.

- Tabletop model. Also available in Inox version
- Water tank capacity 2,000 ml (67.63 fl oz)
- Cutting blade stainless steel
- Standard power supply: 85 - 265 V - IPH+N+PE - 50/60 Hz
- Total installed power: 0.12 kW / 6A
- Machine dimensions (lxwxh): 520 x 250 x 290 mm  
(20.84 x 12.64 x 11.54")





**The right tool for every application,  
that makes the difference!**

### Technical details

For detailed technical information, please refer to our separate data sheets or contact our sales department, who will be happy to answer any questions at: [www.frommpackaging.ca](http://www.frommpackaging.ca)

## BATTERY TOOLS

The new battery powered plastic strapping tools P328S, P329S, and P331 are distinguished by a high reliability of operation. They are user friendly and all comply with the European Safety Regulations EN 415-8. Equipped with reinforced 18 and 28 Volt motors and the new Lithium- Ion battery technology they permit a highly efficient operation of the tools in all industries.

The tools are available for use with Polyester (PET) and Polypropylene (PP) strapping with widths from 12 mm (1/2") up to 32 mm (1 1/4") and strap thicknesses up to 1.53 mm (.063").

These sizes are very suitable to substitute the traditional steel strapping with Polyester (PET) strapping.



### **P328 S** The Smart versatile Medium-Duty tool

**Strap dimensions:**  
12.0 – 16.0 mm x 0.40 – 1.05 mm  
1/2 – 5/8" x .016 – .041"

**Strap tension:**  
250 – 2,600 N / 56 – 585 lbs (adjustable)

**Tension speed:** 49 – 174 mm/s / 1.9 – 6.8 inch/s



### **P329 S** The Smart versatile Heavy-Duty tool

**Strap dimensions:**  
16.0 – 19.0 mm x 0.65 – 1.35 mm  
5/8 – 3/4" x .026 – .053"

**Strap tension:**  
500 – 4,000 N / 112 – 900 lbs (adjustable)

**Tension speed:** 32 – 113 mm/s / 1.3 – 4.5 inch/s



### **P331** – The powerful tool for Heavy duty applications

**Strap dimensions:**  
19.0–32.0 x 0.60–1.53 mm | 3/4 – 1 1/4"

**Strap tension:**  
1200–7000 N/270 – 1575 lbs (adjustable)  
**Tension speed:** 39 – 63 mm/s / 1.5 – 2.5 inch/s



## Batteries & Chargers

### Batteries



Battery Voltage	Used with
18 volt (4.0AH)	P318/26/27
28 volt	P328/29
36 volt	P331

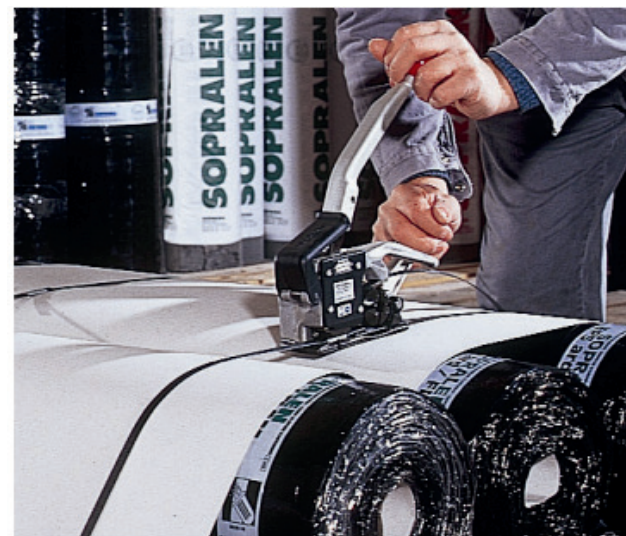
### Chargers



Charger	Used with
18 volt	P318/26/27/28/29
28 volt	P330
36 volt	P331

## MANUALLY OPERATED PLASTIC STRAPPING TOOLS

Both models are light-weight devices, suitable for strapping and sealing flat packaged goods (e.g. pallets, bales, crates and packages of all kinds) with plastic strap. They are characterised by reliability, strength, and maintenance-friendliness and can also be used outdoors. High strap tensions are possible thanks to the tensioning drum. A high joint strength is also guaranteed with special seals and the patented sealing mechanism. With the separate sealing lever the straps are joined in a flash with a single stroke.



### Manually operated plastic strapping tools with seal joint

#### P403



##### Strap Qualities

Polypropylene (PP) and Polyester (PET)

##### Strap Dimensions

12.00 x 0.40 - 0.90mm  
1/2 x .016 - .035"

##### Weight

3.3kg / 7.3lbs

##### Joint

Joint with Serrated Seals

##### Avg. Seal Strength

Approx. 70%

##### Options

•Suspension Bracket

#### P404



##### Strap Qualities

Polypropylene (PP) and Polyester (PET)

##### Strap Dimensions

16.00 x 0.50 - 0.90mm  
5/8 x .020 - .035"

##### Weight

3.8kg / 8.4lbs

##### Joint

Joint with Serrated Seals

##### Avg. Seal Strength

Approx. 70%

##### Options

•Suspension Bracket

# The Pneumatic P series *by FROMM*

Durable design and robust quality



**P 357** For standard work,  
with consistent seal efficiency

**Operating modes:** semi- and fully-automatic

**Strap qualities:** PP and PET

**Strap dimensions:** 12.7 – 16.0 mm x 0.40 – 1.05 mm

**Tension force:** 600 – 1,300 N / 1,200 – 2,500 N

**Tension speed:** 104 or 165 mm/s

**Weight:** 5.7 kg



**P 358** For Heavy Duty applications,  
with consistent seal efficiency

**Operating modes:** semi- and fully-automatic

**Strap qualities:** PET

**Strap dimensions:** 16.0 – 19.0 mm x 0.65 – 1.35 mm

**Tension force:** 1,000 – 2,300 N / 1,900 – 4,000 N

**Tension speed:** 70 or 115 mm/s

**Weight:** 5.7 kg



**P359** For Xtra-HD applications,  
with consistent seal efficiency

**Operating modes:** semi- and fully-automatic

**Strap qualities:** PET

**Strap dimensions:**

19.0 – 32.0 mm x 0.60 – 1.53 mm

Tension force: 2,000 – 3,500 N / 4,000 – 7,000 N

**Tension speed:** 60 or 120 mm/s

**Weight:** 8.2 kg



**P380** For round and small surfaces,  
with consistent seal efficiency

**Operating mode:** only manual

**Strap qualities:** PP and PET

**Strap dimensions:** 13.0 – 19.0 mm x 0.40 – 1.35 mm

**Tension force:** 600 – 2,000 N

**Tension speed:** 120 – 260 mm/s

**Weight:** 6.8 kg

# STEEL STRAPPING TOOLS

## A480



### Advantages

- *Very suitable for strapping of bars, bundles, pipes, coils and packages having a small surface*
- *If used for stationary operation the tool may be suspended on a spring loaded balancer using a suspension bracket (see suspensions)*

Due to its low weight the A480 does not necessarily have to be suspended. This permits more mobile operation. Ideal for strapping tubes, wire coils and all kinds of small bundles, it is a handy and popular tool in numerous industries. Available in two different tensioning levels.

**Strap dimensions**  
10.0 – 19.0 x 0.38 – 0.63 mm  
**Weight**  
4.6 kg (with suspension bracket)  
**Strap tensions**  
2500 N, 4500 N



## A482



Straps of up to 0.90 mm thickness can be processed. The perfect double notch joint guarantees a strength of 75 %. The modern A482 optimizes the strapping of packages, mainly in the metal industry.

**Strap dimensions**  
19.0 x 0.63 – 0.90 mm  
**Weight**  
7.0 kg (with suspension bracket)  
**Strap tensions**  
4000 N, 7000 N

## A483



The most rugged pusher type strapping tool of its kind for continuous strapping operations.

A high performance machine with an outstanding record of reliability in the steel and non ferrous industries

**Strap dimensions**  
32.0 mm / 1 1/4"  
0.80 – 1.00 mm / .031-.040"  
**Weights**  
18.0 kg / 39.7 lbs without suspension  
19.5 kg / 43.0 lbs with suspension  
**Average seal strength**  
approx. 75 %  
**Seals**  
Overlap seals  
**Type of joint**  
Double notch up cut joint  
  
**Strap tension:** The tool is available for two different stages for strap tension  
7000N / 1570 lbs  
9000N / 2020 lbs  
  
**Suspension**  
Four different suspension brackets are available to be ordered separately

## A452



**Strap dimensions**  
19.0 – 32.0 mm / 3/4 – 1 1/4"  
0.63 – 1.27 mm / .025 - .050"  
**Weight**  
4.35 kg / 9.6 lbs  
**Strap tension**  
8500 N / 1900 lbs (6 bar / 87 psi)  
**Seals**  
Overlap seals  
**Sealing**  
With separate sealer model A412 or A461  
**Suspension**  
Eye bolt for standard applications is supplied with the tool

## A461



**Strap dimensions**  
19.0 – 32.0 mm / 3/4 – 1 1/4"  
0.63 – 1.00 mm / .025 - .040"  
**Weight**  
4.2 kg / 9.3 lbs  
**Average seal strength**  
Approx. 75 %  
**Seals**  
Overlap seals  
**Type of joint**  
Double notch up cut joint  
**Tensioning**  
With separate tensioner model A452  
**Two different working versions:**  
Version N = Handle 90° to the strap (normal)  
Version P = Handle parallel to the strap



## Manual steel strapping tools with a seal joint

The tools described here are designed for round objects and goods with small surfaces. The joint requires seal joints and thanks to the ideal lever configuration, these can be produced with minimal force. The average strength of the double notch joint with seals is ca. 75%.



**A402**



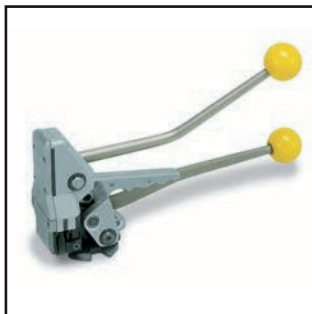
**Strap dimensions**  
19.0 – 32.0 mm / 3/4 – 1 1/4"  
0.63 – 1.00 mm / .025 – .040"  
**Weight**  
4.0 kg / 8.8 lbs  
**Seals**  
Overlap seals  
**Sealing**  
With separate manual sealer model  
**A412**

**A412**



**Strap dimensions**  
19.0 – 32.0 mm / 3/4 – 1 1/4"  
0.63 – 1.00 mm / .025 – .040"  
**Weight**  
3.4 kg / 7.4 lbs  
**Average seal strength**  
approx. 75%  
**Seals**  
Overlap seals, see chart  
**Type of joint**  
Double notch joint  
**Tensioning**  
With separate tensioner model  
**A402**

**A431**



**Strap dimensions**  
10.0 – 19.0 mm / 3/8 – 3/4"  
0.38 – 0.63 mm / .015 – .025"  
**Weight**  
3.4 kg / 7.5 lbs  
**Average seal strength**  
approx. 75 %  
**Seals**  
Overlap seals  
**Type of joint**  
Single notch joint



## SEALLESS COMBINATION TOOLS

**A335**



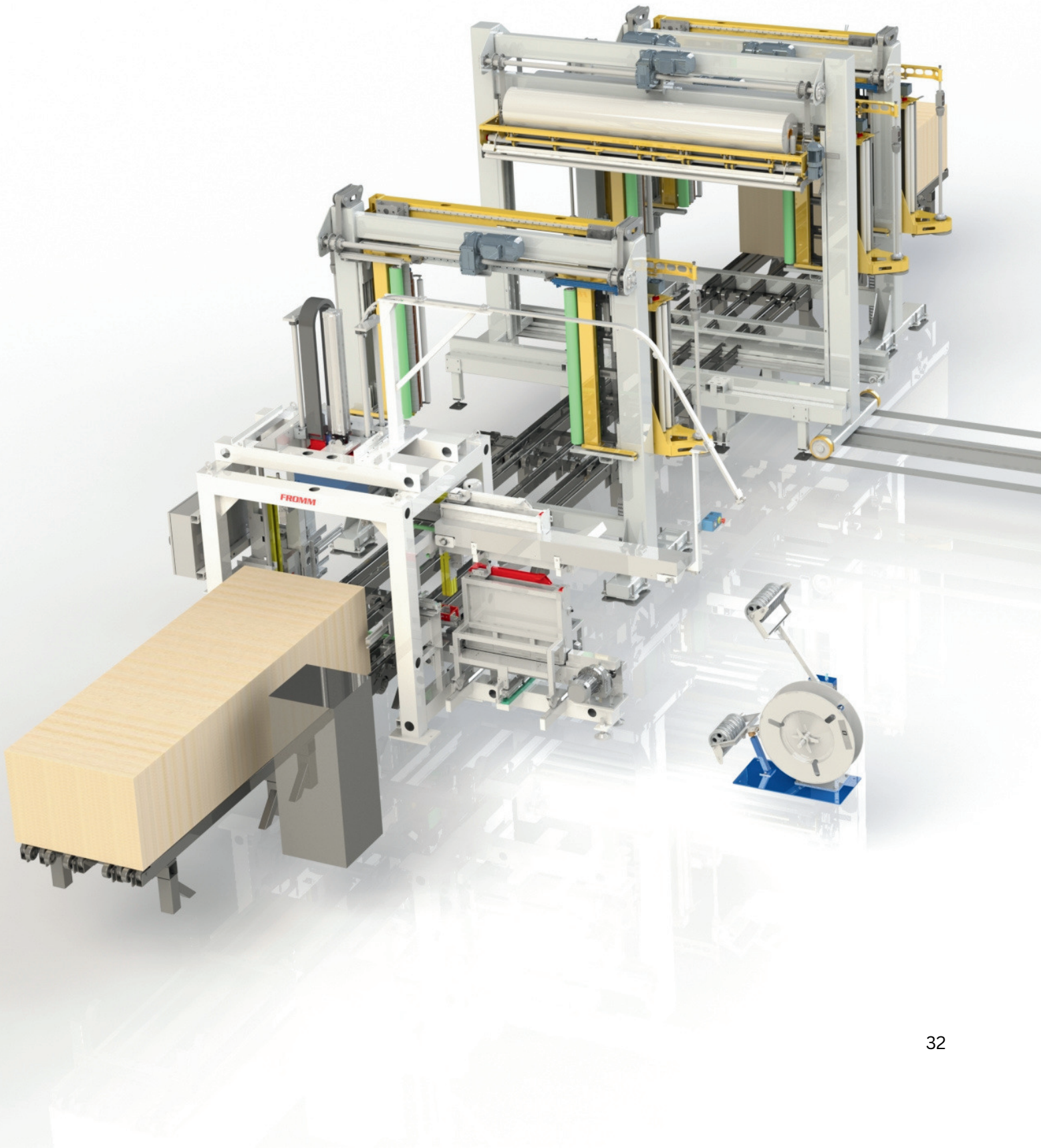
**Strap dimensions**  
12.70 – 20.00 x 0.38 – 0.58mm  
1/2 – 3/4 x .015 – .023"  
**Weight**  
3.9kg / 8.6lbs

**A337**



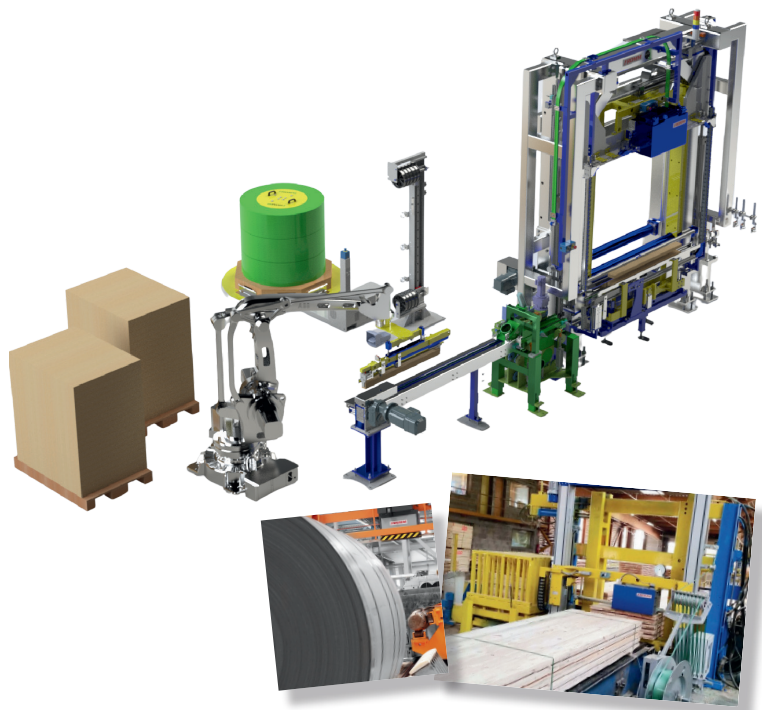
**Strap dimensions**  
9.5 – 20.0 x 0.38 – 0.63mm  
**Weight**  
4.45kg / 9.8lbs

# Automated Solutions





FROMM supplies world renowned in-line stretch wrapping and strapping systems which include custom solutions designed to maintain load security and protect loads during transport. Used with our ultra-modern stretch wrap films and plastic/steel strapping you will achieve unrivalled load security.



## Facts you should know about our solutions

### Strapping Solutions

- Manual, Semi- or Full-automatic strapping with Steel, PET or PP strap
- Modular and tailor made machine concepts. Integrated in new or existing packaging lines
- Horizontal, vertical, cross and in-length strapping with single or multiple strapping heads
- Top, bottom, inclined or side strap closures.
- Various specialized strapping heads with tension forces up to 18,000 N Strapping of flat, narrow or round packages
- Retrofits of existing machines of all brands and conversions to PET strap.
- Wide choice of Strap dispensers for single or multiple coils (standard, Jumbo or Super Jumbo), upto a total weight of 1,000 kg
- Numerous options and combinations possible with all kinds of other packaging machines and materials



### Automated Wrapping Solutions

- Horizontal, Vertical and Curtain Wrapping. Up to 6 sides wrapping Easy to use and safe film loading. Automatic roll change as option
- HMI tension control for unstable products, fragile boxes, uneven stacked and irregular shapes.
- Fast wrapping up to 100pph.
- Integrated load stabilizer
- Power roping. Reinforced connection between pallet and load Fast dust proof wrapping with top sheet.
- Suitable for low level conveyor operations.
- Wide choice of options



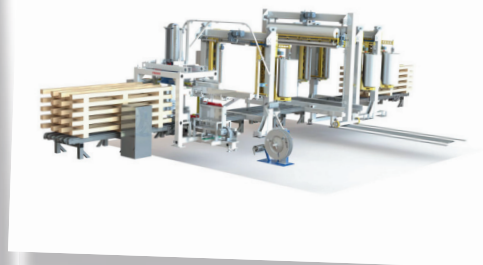
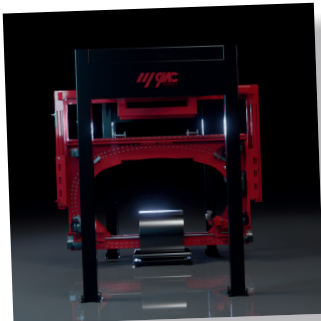
**Packaging  
examples**  
for strapping



**Packaging  
examples**  
for stretch film and flat film







## FROMM Polyester strap (PET)

by FROMM.

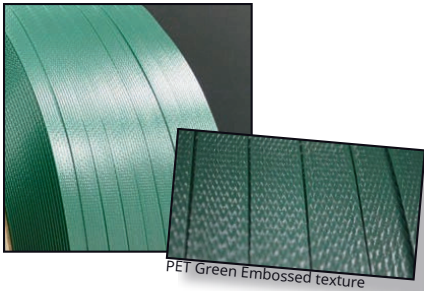
As a global leader in high-quality tools and equipment for a wide range of strapping systems, FROMM operates state-of-the-art polyester (PET) strap manufacturing facilities worldwide.

With proven performance and cost efficiency, PET strapping has become the preferred solution in over 90% of new installations and major system upgrades across a wide range of industries.



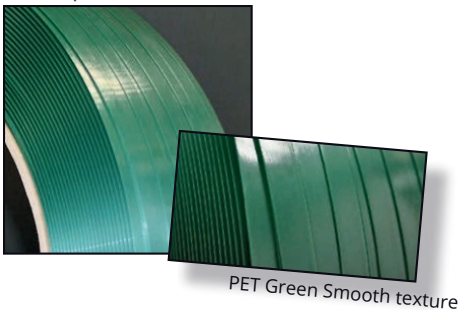
### Green Embossed

Eco-S



### Green Smooth

Starstrap Plus



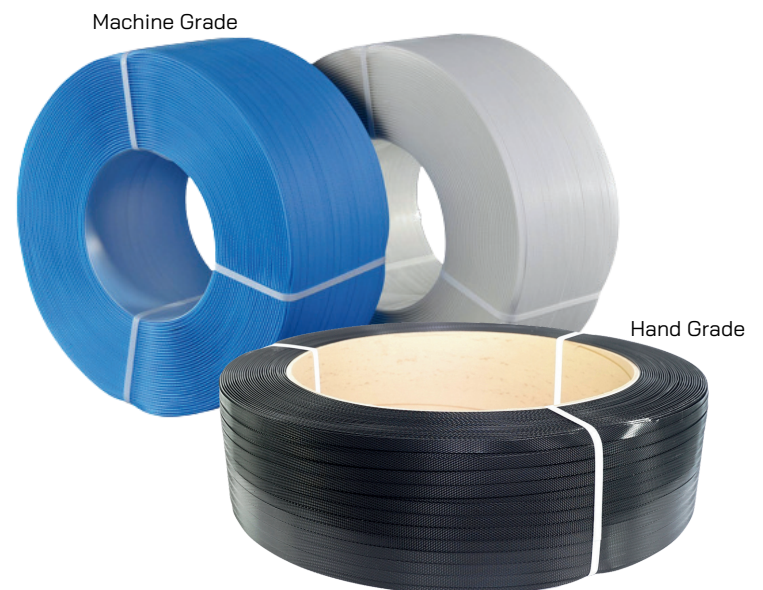
## Some eye catching advantages of PET-strap over steel strapping:

- Made of first class recycled PET (bottle grade)
- Higher elongation properties
- High breaking strength
- Very constant tensile strength
- Absorbs shock loads, shrinkage and stretching, during transport and
- handling
- Lighter weight, more meters to the Kg.
- Safer to handle

## Polypropylene strap (PP)

Polypropylene Strapping is used in application such as bundling textiles and general warehouse use for lightweight packs. Polypropylene is a lightweight, flexible, rust-proof strapping material that keeps products secure during transit & storage.

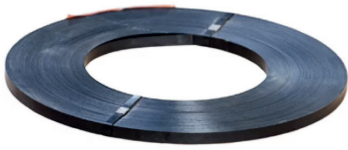
FROMM Polypropylene strapping are available in widths from 5 mm – 15.5 mm.



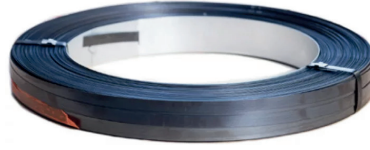


# Steel Strapping

Standard duty steel strap (max. 850N/mm2) /  
High tensile steel strap (max. 1100N/mm2)  
Strap Width 1/2", 5/8", 3/4", 1 1/4"



Ribbon Wound



Oscillated Wound



## Dispensers



**FRP-3080**

### Plastic & Steel

Strapping Dispenser for  
Plastic and Steel.  
For Oscillated wound coils  
Face width : 3 " - 8"



**FRP-3015**

### Polypro, Polyester & Cord

For Oscillated Strapping Coils  
Entry-level model. Easy quick  
clamp to load coils.



**FRP-3340**

### Steel Strapping

3/4" & 1 1/4"  
CORE ID SIZE 16".  
For ribbon wound  
strapping coils.



**FRP-3065**

### HD Cobra Strapping Dispenser

Ribbon-wound cobra dispenser  
for heavy duty use.  
Strapping feeds from inside coil.  
For Steel



**FRP-3075**

### Floor Mount with Cutter

Steel or Polyester. Oscillated &  
Ribbon Wound.

Features a foot activated cutter  
blade



**FRP-3450**

### Automatic Strap Cutter

Automatically cuts to length steel  
or poly strapping

Oscillated & Ribbon Wound



## Seals



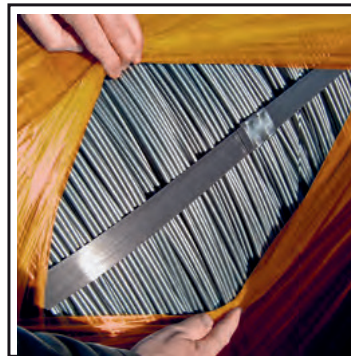
Fromm supplies a range of seals to be used with plastic and steel strapping. With a variety of sizes and variations, seals can be used with manual or automatic strapping tools. Custom stamping is available for our range of seals.

## Spares



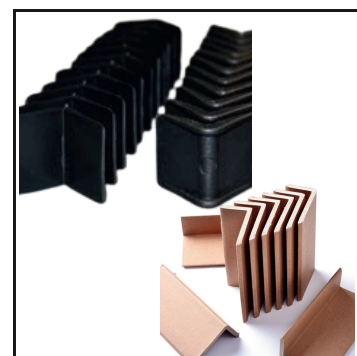
Spare parts, batteries, and chargers for FROMM's comprehensive range of strapping tools and packaging machines are readily available, along with trained engineers who are able to service all FROMM tools and machines.

## VCI



Fromm Packaging Systems offers a comprehensive range of VCI products, including but not limited to VCI papers, VCI polyethylene sheeting, and VCI liquids as well as support products such as VCI emitters, foams and desiccants.

## Edge Protectors



Corner pieces placed under the strap protect your products when the strap is tensioned. Available both in Plastic and Cardboard

## Demo Pack



A compact, portable strapping box designed for demos and light use. It holds few ft of steel, polyester, or polypropylene strap—ideal for on-site testing, training, or showcasing strapping solutions.

## Strap Bandit



Strap Bandit's are an innovative solution to a common strapping problem in warehouses and workshops. Use a strap bandit to feed the strapping under the pallet and out the other side without the end of the strap getting lost or tangled underneath.

## Strap Chopper



FROMM's strap choppers and separation systems help companies eliminate their manufacturing by-products; keeping scrap materials out of landfills and helping companies achieve their zero waste to landfill recycling goals.

## Hand tools



Standard and Heavy duty steel & plastic strapping hand tools like Tensioners, Sealers, Cutters.

Service

We're just a call or email away! Contact our friendly customer service team at



905-428-3444 or

drop us a line at



sales@frommpackaging.ca

we're always happy to assist.



Repairs

FROMM's certified technicians are ready to keep your equipment performing at its best. With years of hands-on experience and access to a complete inventory of spare parts, we provide fast, reliable repair services. If you experience an emergency breakdown, we act quickly to get you back on track. Plus, we'll create a maintenance plan tailored to your needs, ensuring long-term performance and peace of mind.



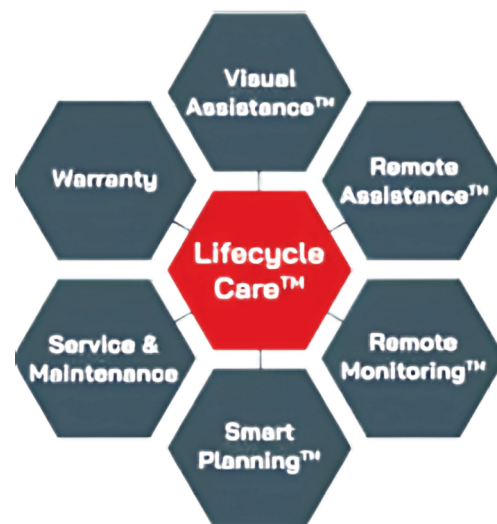
STRAPPING TOOL REPAIR  
A 7-STEP PROCESS







SCAN HERE  
TO REQUEST  
SERVICE



## Lifecycle care

FROMM's Global Lifecycle Care (LLC) service ensures you receive the maximum uptime and longlife of your equipment and installation at the lowest possible TCO. All offered with the highest level of quality and security.

All FROMM companies offer their local customers the Lifecycle Care program for FROMM machines and strapping tools. From the first consultation, installation and start-up, throughout the entire life cycle – with maintenance, delivery of spare parts and possible upgrades – you can use this program to keep your FROMM products in top condition, limit downtime to the minimum and extend its service life.



Get in Touch  
with Us

+1 905 428 3444  
[Sales@frommpackaging.ca](mailto:Sales@frommpackaging.ca)  
[www.frommpackaging.ca](http://www.frommpackaging.ca)





1738 Orangebrook Crt, Unit 17, Pickering, ON, L1W 3G8

[www.frommpackaging.ca](http://www.frommpackaging.ca) | 905-428-3444

